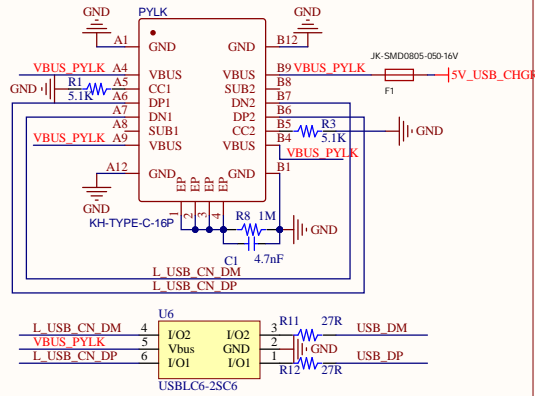
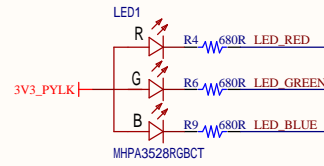


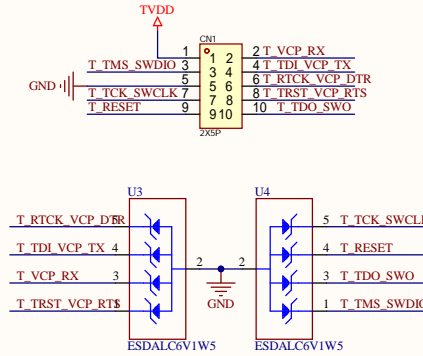
USB



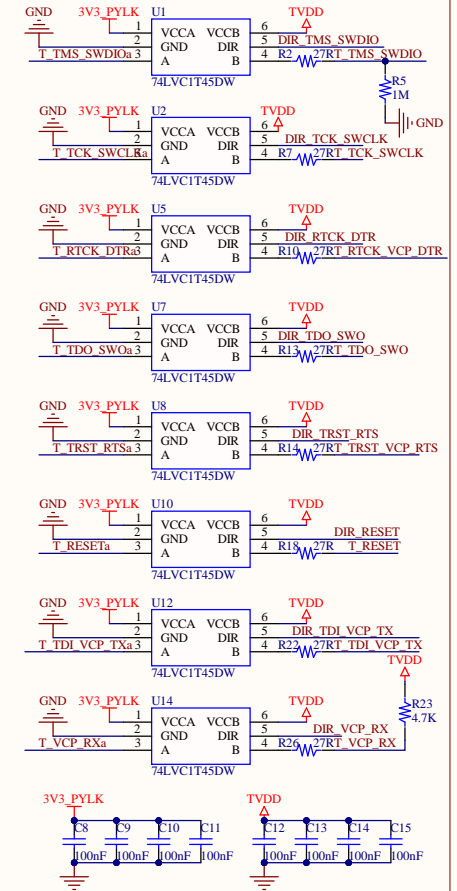
LED



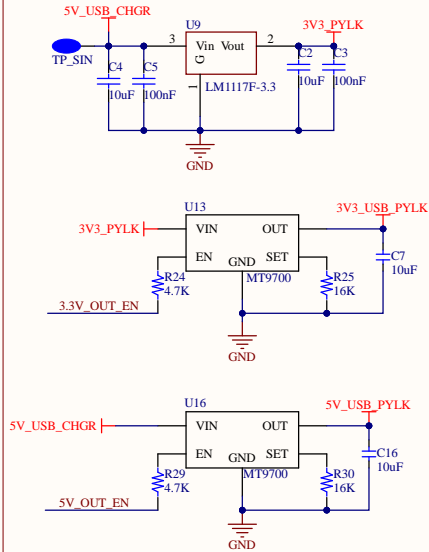
Debug Connector



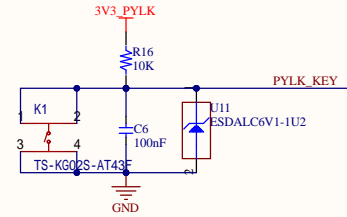
Level Shift



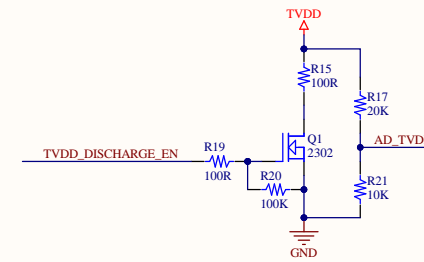
Power



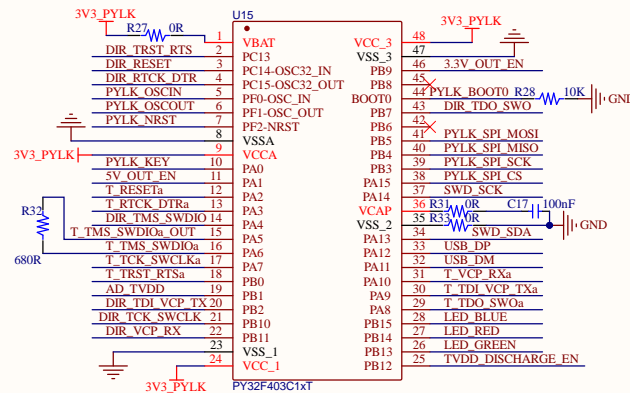
Key



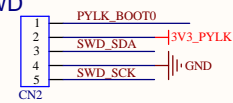
ADC&Electric discharge



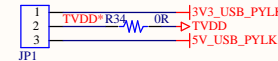
MCU



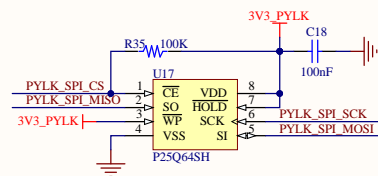
SWD



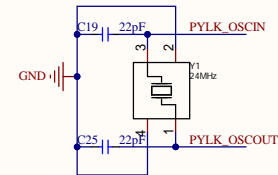
TVDD_Selection



Flash



OSC

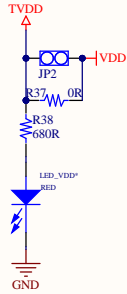


When the DIR pin is set to logic high (1), the data direction is from VCCA to VCCB.
When the DIR pin is set to logic low(0), the data direction is from VCCB to VCCA

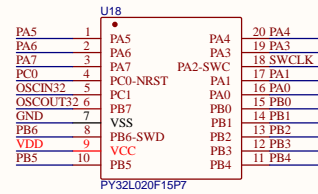
T TRST_VCP_RTS	T TRST_VCP_RTS
T RTCK_VCP_DTR	T RTCK_VCP_DTR
T TDI_VCP_TX	T TDI_VCP_TX
T VCP_RX	T TDI_VCP_TX
T TDO_SWO	T TDO_SWO
T RESET	T TDO_SWO
T TCK_SWCLK	T TCK_SWCLK
T TMS_SWIDIO	T TMS_SWIDIO



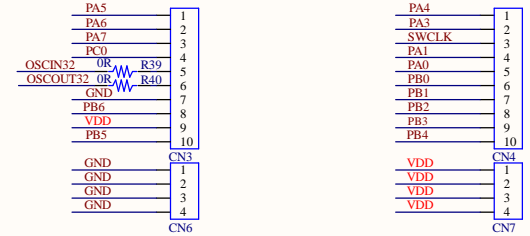
VDD_IDD Test



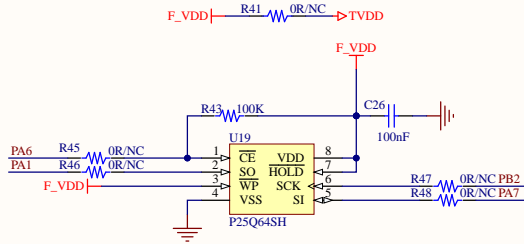
MCU



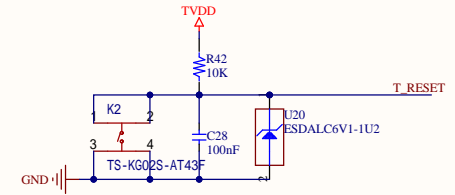
Extension PIN



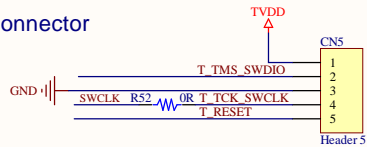
FLASH



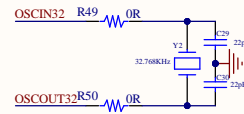
NRST



Debug Connector



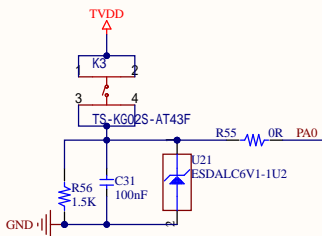
OSC



SWD IO Select



Key



Led

